



Website: www.derbyremap.info

Remap Newsletter No.102 – June 2024

Derby, Burton & District Panel
Serving Derbyshire & East Staffordshire

Editor: Bernard Killeen e-mail Bernard@longlands.net



Many years ago Maurice Elliott adapted an electric car for Ben Brierly who was a child at the time with spinal muscular atrophy. Unfortunately Ben died of his condition a short time ago. Remap is very grateful to Ben's family who arranged a fund raising charity football match. Over £3700 was raised and donated to the panel.

We have also recruited two new members and we warmly welcome Don Walton and Peter Woolley.

As usual, our stand at the Etwell Well Dressings proved popular with many visitors over the weekend. There is a lot of interest in what we do. Thanks to Brian Hermiston for organising the event.

In view of several recent retirements, we would like to recruit more new members. **We need volunteers** who want to help disabled people live better lives by making or adapting aids. The panel also need members to assist with talks, exhibitions and publicity. If you know anyone who would like to help, then please contact Peter Brien on 01773 821768 or send an email to derbyremap@gmail.com.

We are now receiving referrals using a website portal. Please select to submit a referral for yourself, or on behalf of someone else, and then fill in the form as best you can. Please pay particular attention to your contact details, specifically your email address and phone number and the client's postcode, which will be used to determine the Remap panel to which the referral will be sent. To send a referral, log on to the Remap website, <https://www.remap.org.uk/referral-form/>

DB-24-005 – Peter Brien



Young man, late 30s, with MND needed a drop-down banister across stair head for safety in the night. A banister rail, wooden bracket with dowel pivot was made. A small stay on opposite side receives the rail securely when down. A cabin hook holds it secure when upright. The rail was painted to match existing banisters and woodwork, using remains of a tin of paint from the client.

DB-23-084 – Trevor Beeson

Jenna suffered from back problems and was expecting a baby in May. She was worried that she would not be able to lift the baby out of his cot without causing damage to her back so she asked if we could modify the cot so that the side could be opened like doors.

The solution was to cut the cot side in half and refinish the cut ends with a piece of oak to match the finish on the frame. Hinges were then fitted to each side piece and a robust bolt made with a 12mm dia. steel bar sliding into two long oak blocks. To avoid the bolt being opened by the child as he gets older an extra slotted block was fitted to the door to house the bolt handle so to open the door, first the bolt had to be pushed forward rotated and then pulled back. A rotating latch was also fitted to the bottom of the doors so that either door could be opened without the other, or both doors could be opened together.



DB-23-072 – Nich Holberton



A client has very limited movement and required a means of holding a drinks bottle.

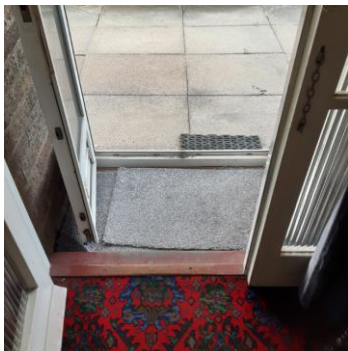
A jointed clamp arm was sourced from the internet and was clamped to a fixed bed lever at the edge of the client's bed.

The bite valve was positioned as close as possible to the client's mouth. The client was then able to talk into her supported mobile phone without fear of the straw falling off her chest.

The clamp allowed carers to move it out of the way when she was being turned/moved and the adjustable joints allowed the arm to be altered slightly if her position in bed was changed. A small length of tubing and a small recessed wooden handle were left for the carers to fit over the clamp and joint adjusters so that they would be able to increase the force on the adjusting levers to loosen and tighten them more easily.

DB-23-080 – Peter Brien

A client is using a manual wheelchair and needs help with an access ramp. They have a folding ramp for outside, and a ramp to bridge inner door to outer, but it is not long enough. I made a block to fit against the inner door, and the ramp rests on it. Non-slip tape applied to top surface and bolts on the base to provide levelling



DB-24-011 – John Gellatly



The client has purchased a small portable ramp to enable him to access the garden, however the sides of the ramp prevented the patio doors to open fully hence he was not able to get outside. In discussion with the OT it was decided to cut off the interfering edges on the ramp to enable the doors to open fully.

This required cutting two triangular sections off the vertical sides of the ramp. The amount required to be removed was scribed in situ to mark the level off interference. As the client was not available when I returned the ramp (after cutting off the triangular sections) it was not possible to confirm that it was successful.

DB-23-081 – John Gellatly



The requirement was to provide support to Alistair who had just got home from hospital and was finding all the problems in making the house wheelchair friendly. The OT was providing full wheelchair access for the front door and has ordered a ramp to suit.

The requirement was to provide access out to the garden. We identified the most appropriate

door to target and then a wooden ramp was made on the inside to match up with the threshold. For the outside I provided a temporary metal ramp that I had available. This arrangement worked well with the wheelchair. I then suggested that his wife should use it several times to ensure that she was happy laying out the ramp and the angle was easy for her to push the wheelchair.

DB-24-003 – Mike Banks



Ken is a keen sailor but has limited mobility. He has a specially fitted seat but is finding it increasingly difficult to hold his head upright

Remap had already fitted a centre armrest which also supports a new joystick controlling the rudder. It was felt that this armrest would now provide the necessary side support for the client if the seat is removed and the original "deckchair" seat re-installed. Making this armrest sideways adjustable provides an additional option to maximise the client's support. A headrest was also fitted to stabilise the client's head movement.

During sailing trials it has been concluded by the client's helpers that he does seem to be more comfortable.