



Website: [www.derbyremap.info](http://www.derbyremap.info)

## Remap Newsletter No.93 – March 2022

Derby, Burton & District Panel  
Serving Derbyshire & East Staffordshire

Editor: Bernard Killeen e-mail [Bernard@longlands.net](mailto:Bernard@longlands.net)



The panel is meeting at the RBL, Mickleover again. This is our usual meeting place, however covid restrictions meant that some meetings over the New Year were held on zoom. Nich Holberton, Mike Banks and Allan Sutton have presented talks recently that have been well received and we are planning to exhibit at Etwall Well Dressing in May.

We are now receiving referrals using a website portal. To send a referral, log on to the Remap website, <https://www.remap.org.uk/referral-form/>. Please select to submit a referral for yourself, or on behalf of someone else, and then fill in the form as best you can, giving the same level of information as before. Please pay particular attention to your contact details, specifically your email address and phone number and the client's postcode, which will be used to determine the Remap panel to which the referral will be sent if you haven't selected one.

### DB-21-041 – Mike Banks



The client has suffered motor-impairment of her hands and fingers and can no longer hold and manipulate a book.

A device had to be made to hold an adult paperback book of any of the current popular sizes with up to 500 pages, and which enabled the

client to easily turn each page, either backwards or forwards, without losing control of the book.

A frame was designed and made to hold the book such that it will lie flat with the pages open. The client can then manipulate the pages without loss of control.

A full write up and video is on the Remap Makeability web site [here](#).

### DB-021-081 – Mike Banks



The Derby Royal Orthotics department required a standard office chair to be fitted with a device to prevent it swivelling. Mike constructed and fitted a cantilever beam to stop

the swivel, but still allowing the chair to lift.

### DB-21-057 – Trevor Beeson



The client has been suffering from motor impairment and has found it difficult to get into the shower over her bath.

The solution was to make a seat that would bridge the bath at the level of the bath top so she could sit on

it.

A bench was made using plastic lumber made from recycled plastic bottles and often used for garden furniture.

### DB-21-063 – Bernard Killeen

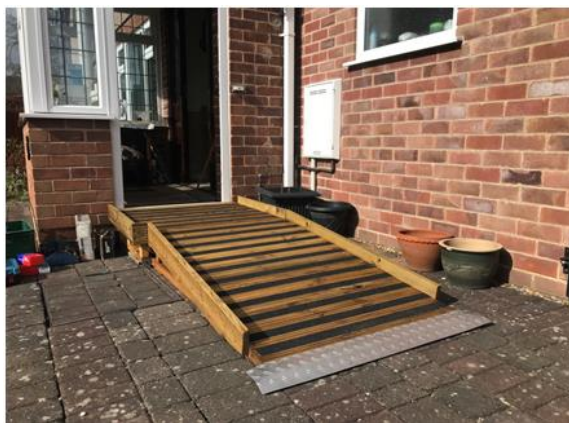
The client suffered an upper arm amputation and now struggles to apply deodorant single handed.

A means of securely holding a cream dispensing deodorant container was needed. The solution involved adapting a microphone stand to mount a holding device.

Spring clips were used to hold the container. There is adjustment in the stand to set the correct height and the client can hold the stand steady using his foot on the base.



### DB-21-072 – Peter Brien



A client with advanced Alzheimers is pushed in her wheelchair. A ramp was requested for access to front door through a front porch. This turned out to be more tricky than expected, due to the geometry and levels involved. The job was in two distinct parts – raising the level within the porch, and a ramp outside.

The entire floor of the porch area was raised using 18mm plywood flooring, supported on timber stud work. The existing carpet was lifted first, and then replaced on the raised floor. Part of it was raised more than the rest, with a curved slope between the two.

An external ramp was made from decking and stud work timber. This was awkward because the ground outside was block paving, and not quite level. It dipped by 2-3 cm in various directions. And there was also a manhole cover that had to be kept clear.

### DB-21-017 – John Gellatly



The requirement was to provide a more complex locking mechanism for a standard stair gate to prevent a boy with autism escaping from his safe area.

An ingenious lock mechanism was designed, made and fitted to the stair gate. The family are very happy with it and the boy has not yet been able to unlock it.

The lock has since been used for other stair gate applications and has proved to be effective.

### DB-21-045 Trevor Beeson



Oliver was born with a brain tumour and the operations and chemotherapy he has undergone over the last 4 years has slowed his development, meaning that he is unable to walk or crawl. He has a rocking chair which he is able to lie in and rock himself but he is outgrowing it. The problem

was to find a chair which would hold him in a reclined position, and allow him to rock himself by swinging his legs.

A Childs POANG CHAIR was obtained from IKEA and fitted with rockers made from 18 mm. ply, which could be adjusted so the chair could be used in a reclining position to start with, and moved in increments to a sitting position as Oliver gained strength and control.

### DB-22-027 Robert Little



The client uses a wheelchair but is unable to access her garden because of the garden steps. She needs a portable ramp to access the garden. Because the steps are very close to the house the ramp had to

start right next to the house directly in front of the double doors. The ramp would therefore block the steps and also get in the way of opening and closing the doors.

The solution was to construct a bespoke ramp that could be easily and quickly installed and dismantled again afterwards. The slope was within the guidelines for assisted wheelchair use. The ramp had to fit very accurately into the gap between the house and the patio, bridging the “moat” between the two. The ramp was made using 5 decking boards cut to length and supported by 2 wooden supports that were made to the exact height needed, and positioned exactly. The supports held the boards in place allowing them to be loose yet safely wedged in place and all 7 pieces easily placed and removed as required. For safety reasons, non slip tape was stuck on the boards and the outside ones had raised edges attached.